

PRODUCT SHEET

6.1.3. FLANGED VALVES

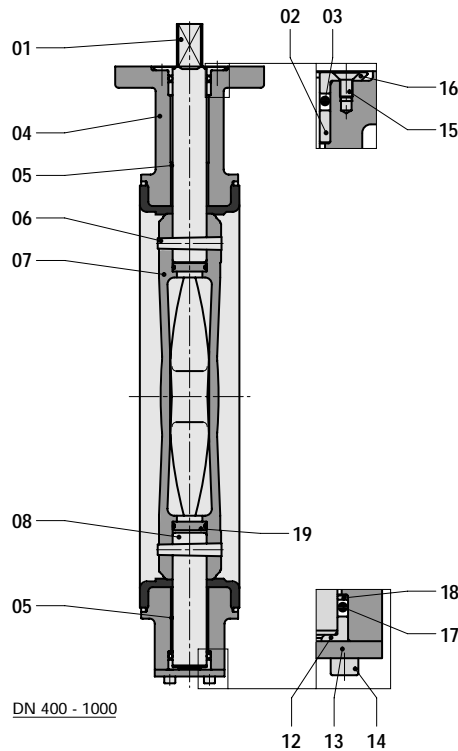
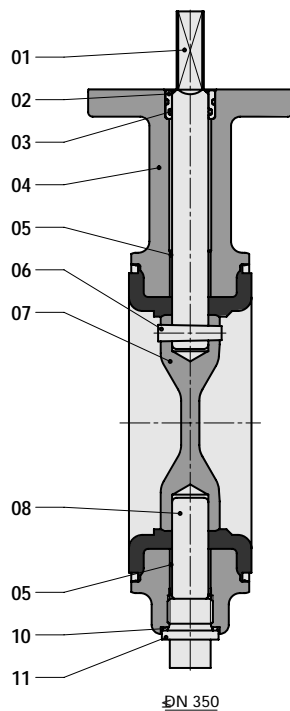
6.1.3.1 BUTTERFLY VALVE - RANGE EVML DN 80 - 800 (3" - 32")

General specification, construction details, parts list and dimensions

General Specification:	
Body type	Single flange wafer long type
Valve function*	Isolating valve (on/off) and/or regulating valve
Installation	Clamping between flanges with through bolting and with possibility for end of line service
Flange connections*	PN 10 / PN 16
Valve shut off pressure*	2,5 / 6 / 10 / 16 bar
Seat tightness	Bi-directional tight shut off acc. ISO 5208, Rate A
Face to face dimension	ISO 5752 / EN 558, basic series 16 (wafer long), DIN 3202 k3
Available type approvals*	PED, KIWA, DVGW gas & water, SVGW, WRAS, LRS, DNV, ABS, BV, CCS, CRS, GL, NKK, RINa, RMRS, GOSST, Stoomwezen, FM
Actuation possibilities*	Manual, electric, pneumatic or hydraulic

* Needs to be specified when ordering. Contact Wouter Witzel Eurovalve for detailed advice

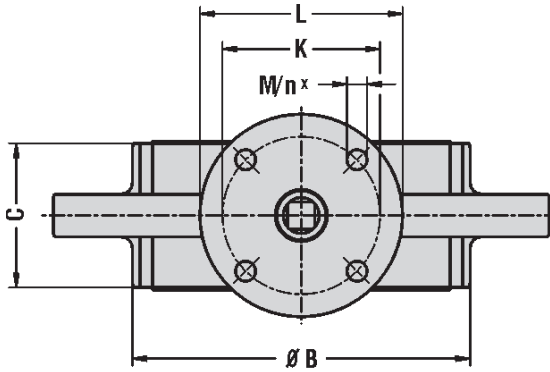
CONSTRUCTION DETAILS:



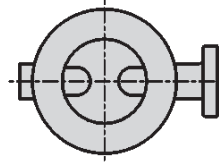
PARTS LIST:	
ITEM	DESCRIPTION
01	shaft
02	bush
03	o-ring
04	body rubber lined
05	bearing
06	conical pin
07	disc
08	shaft
10	sealing ring
11	plug

PARTS LIST:			
ITEM	DESCRIPTION	ITEM	DESCRIPTION
01	shaft	12	axial bearing
02	bush	13	cover plate
03	o-ring	14	screw
04	body rubber lined	15	screw
05	bearing	16	flanged bush
06	conical pin	17	o-ring
07	disc	18	ring
08	shaft	19	sealing plate

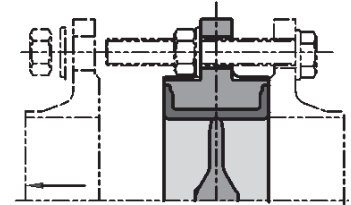
RANGE EVML DN 80 - 800 (3" - 32")



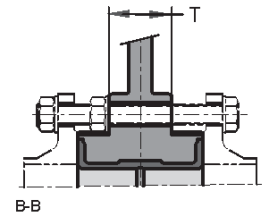
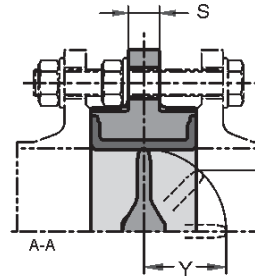
PREFERRED POSITION
WHEN INSTALLED IN
HORIZONTAL PIPELINE



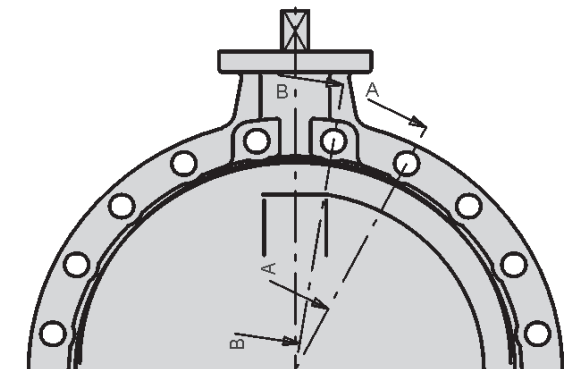
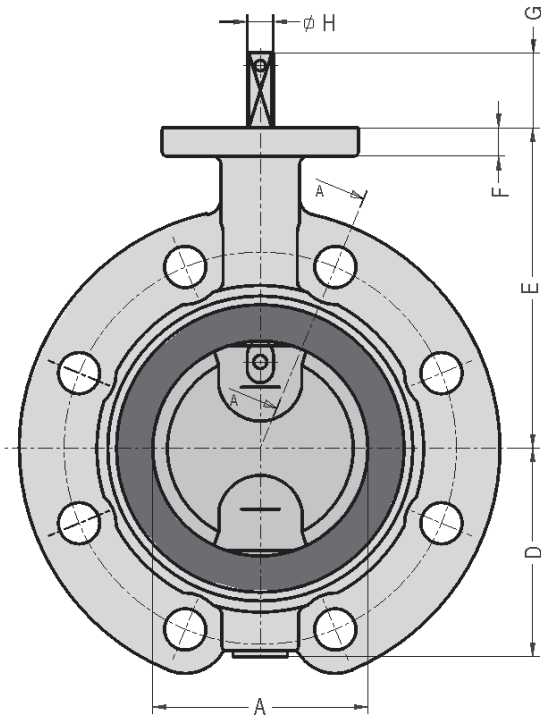
END OF LINE SERVICE



IN LINE INSTALLATION



for bolt lengths see pag. 19



DIMENSIONS:

DN	NPS	A	B	C	D	E	F	G	H	K	L	M	n	ISO 5211	S	T	X	Y	±kg
50	2	ALTERNATIVE SEE EVBS													-	-	-	-	-
65	2½	ALTERNATIVE SEE EVBS													-	-	-	-	-
80	3	80	130	64	78	133	12	34	10	70	90	9	4	F07	19	-	48	8	6.5
100	4	100	150	64	98	147	12	34	12	70	90	9	4	F07	19	-	77	18	7.5
125	5	125	182	70	109	160	12	34	12	70	90	9	4	F07	20	-	104	28	11
150	6	150	210	76	133	180	14	34	16	70	90	9	4	F07	20	-	130	37	14
200	8	200	262	89	158	204	14	34	16	70	90	9	4	F07	21	-	179	56	18
250	10	250	315	114	194	245	15	45	24	102	125	11	4	F10	23	-	223	68	28
300	12	300	371	114	219	270	15	45	24	102	125	11	4	F10	24	-	278	93	39
350	14	336	405	127	256	315	15	45	24	102	125	11	4	F10	26	-	311	105	50
400	16	386	470	140	308	363	25	50	30	140	175	17	4	F14	28	43	360	123	95
450	18	436	522	152	334	388	25	50	30	140	175	17	4	F14	28	54	409	142	115
500	20	486	576	152	360	413	25	50	30	140	175	17	4	F14	32	60	462	167	155
600	24	586	672	178	426	510	25	50	40	140	175	17	4	F14	35	76	559	204	230
700	28	686	776	229	480	560	25	60	46	165	210	21	4	F16	37	115	647	229	330
750	30	763	826	229	520	585	25	60	46	165	210	21	4	F16	37	115	699	253	380
800	32	786	880	241	525	610	25	60	46	165	210	21	4	F16	40	115	749	273	430