

PRODUCT SHEET

6.1.2.3 BUTTERFLY VALVE - RANGE EVTLS DN 50 - 1200 (2" - 48")

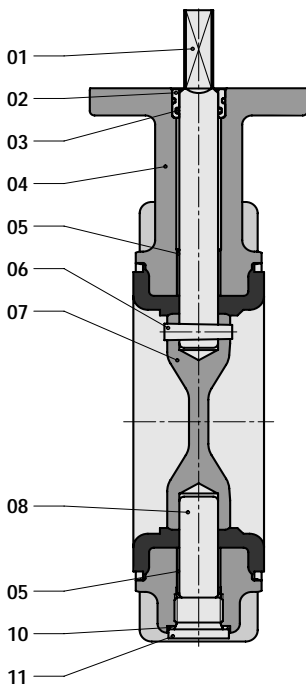
General specification, construction details, parts list and dimensions

General Specification:	
Body type	Lugged wafer short type with tapped or through flange holes
Valve function*	Isolating valve (on/off) and/or regulating valve
Installation	Bolting between flanges. As end of line valve when holes are tapped
Flange connections*	PN 6 / 10 / 16 / ANSI Class 150 (JIS 5/10 on request)
Valve shut off pressure*	2,5 / 6 / 10 / 16 / 20 bar
Leakage rate	ISO 5208, Rate A (Bi-directional tight shut off)
Face to Face dimension	ISO 5752 / EN 558, basic series 20 (wafer short)
Available type approvals*	PED, Kitemark, KIWA, DVGW water, SVGW, WRAS, DNV, ABS, BV, CCS, CRS, GL, LRS, RiNa, NKK, RMRS, UL, FM, GOSST, Stoomwezen
Actuation possibilities*	Manual, electric, pneumatic or hydraulic

* Needs to be specified when ordering. Contact Wouter Witzel Eurovalve for detailed advice

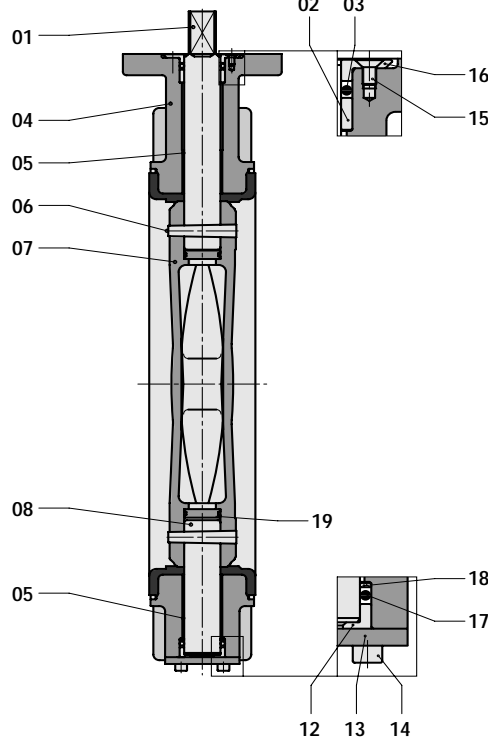
CONSTRUCTION DETAILS:

DN 50 - 350



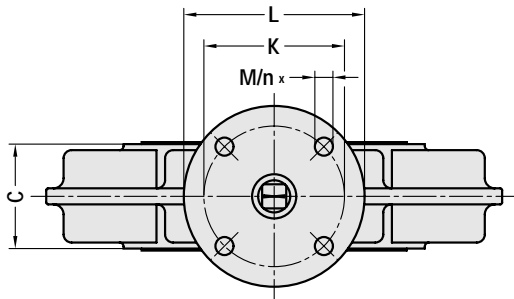
PARTS LIST:	
ITEM	DESCRIPTION
01	shaft
02	bush
03	o-ring
04	body rubber lined
05	bearing
06	conical pin
07	disc
08	shaft
10	sealing ring
11	plug

DN 400 - 1000

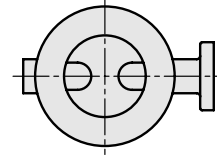


PARTS LIST:			
ITEM	DESCRIPTION	ITEM	DESCRIPTION
01	shaft	12	axial bearing
02	bush	13	cover plate
03	o-ring	14	screw
04	body rubber lined	15	screw
05	bearing	16	flanged bush
06	conical pin	17	o-ring
07	disc	18	ring
08	shaft	19	sealing plate

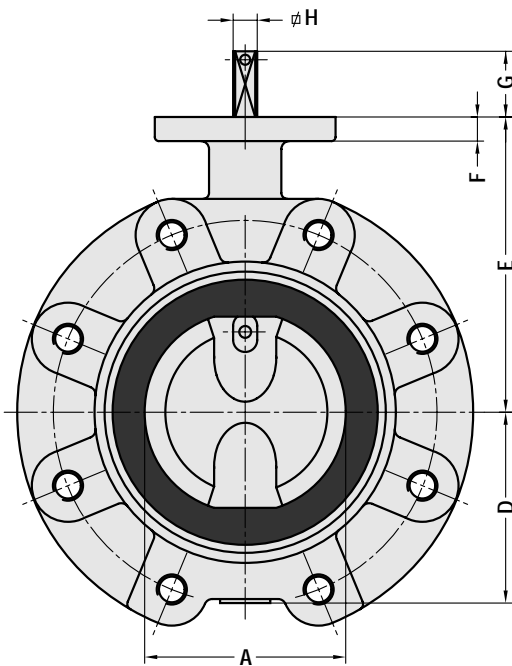
RANGE EVTLS DN 50 - 1200 (2" - 48")



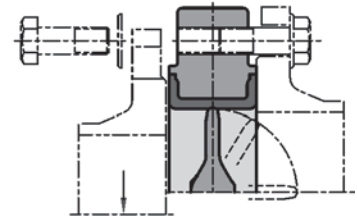
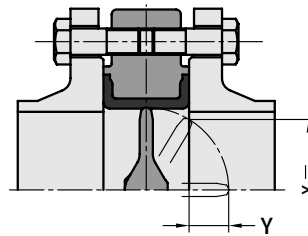
PREFERRED POSITION
WHEN INSTALLED IN
HORIZONTAL PIPELINE



DEAD END SERVICE



IN LINE INSTALLATION



BOLTING BY HEXAGON HEAD BOLTS,
STUDS OR THREADED ENDS

for bolt lengths see pag. 19

* F30 (Pcd. 298 - 8 x Ø 21) at Δp max = 16 bar
** F35 (Pcd. 356 - 8 x Ø 31) at Δp max = 16 bar

DIMENSIONS:

DN	NPS	A	C	D	E	F	G	H	K	L	M	n	ISO 5211	X	Y	±kg
50	2	50	43	63	118	12	34	10	70	90	9	4	F07	25	4	8
65	2½	65	46	71	126	12	34	10	70	90	9	4	F07	46	10	9
80	3	80	46	78	133	12	34	10	70	90	9	4	F07	66	17	10
100	4	100	52	98	147	12	34	12	70	90	9	4	F07	86	24	12
125	5	125	56	109	160	12	34	12	70	90	9	4	F07	112	35	16
150	6	150	56	133	180	14	34	16	70	90	9	4	F07	140	47	20
200	8	200	60	158	204	14	34	16	70	90	9	4	F07	191	70	25
250	10	250	68	194	245	15	45	24	102	125	11	4	F10	241	91	28
300	12	300	78	219	270	15	45	24	102	125	11	4	F10	290	111	36
350	14	336	78	256	315	15	45	24	102	125	11	4	F10	327	129	50
400	16	386	102	308	363	25	50	30	140	175	17	4	F14	373	142	85
450	18	436	114	334	388	25	50	30	140	175	17	4	F14	421	161	105
500	20	486	127	360	413	25	50	30	140	175	17	4	F14	470	180	130
600	24	586	154	426	510	25	50	40	140	175	17	4	F14	566	216	205
700	28	686	165	480	560	25	60	46	165	210	21	4	F16	666	261	325
750	30	736	190	526	585	25	60	46	165	210	21	4	F16	712	273	385
800	32	786	190	525	610	25	60	46	165	210	21	4	F16	863	342	625
900	36	886	203	635	690	30	90	60	254	300	17	8	F25	863	342	625
1000	40	986	216	685	740	30	90	60	*254	350	*17	8	*F25	973	390	950
1200	48	1186	254	870	855	35	85	75	**298	415	**21	8	**F30	1159	466	1400